

# Lotus



**Svenska Kakel**  
Kvalitet • Kunskap • Service

## Lotus



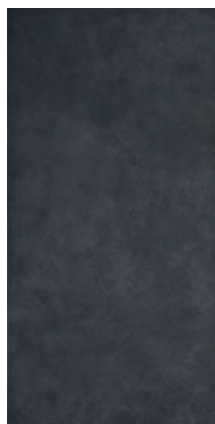
### 30,5 x 61



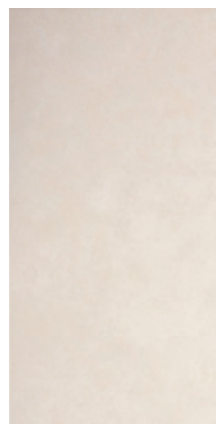
Grey  
4892-36



Antracit  
4893-36



Black  
4894-36



Ivory  
4890-36



Brown  
4891-36

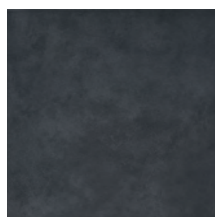
### 30,5 x 30,5



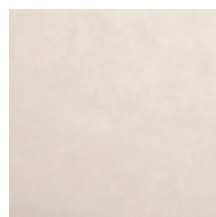
Grey  
4892-30



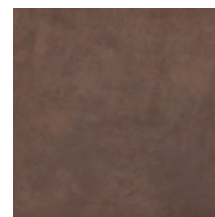
Antracit  
4893-30



Black  
4894-30

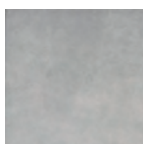


Ivory  
4890-30

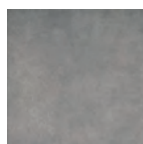


Brown  
4891-30

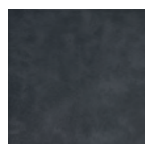
### 20 x 20



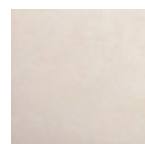
Grey  
4892-20



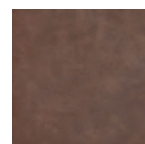
Antracit  
4893-20



Black  
4894-20



Ivory  
4890-20



Brown  
4891-20

### 10 x 10 (nätmonterad)



Grey  
4892-10



Antracit  
4893-10



Black  
4894-10



Ivory  
4890-10



Brown  
4891-10

# Svenska Kakel

[www.svenskakakel.se](http://www.svenskakakel.se)

## Lotus



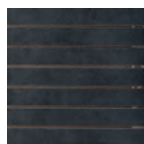
2,6 x 20 (ark 20 x 20)



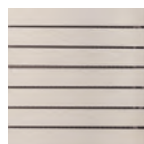
Grey brick  
4892-20-B



Antracit brick  
4893-20-B



Black brick  
4894-20-B



Ivory brick  
4890-20-B



Brown brick  
4891-20-B

## Symboler



Väggplattor



Golvplattor även  
lämpliga för vägg



Lämpliga för  
golvvärme



Frostbeständiga



**Homogena plattor**  
Plattor lämpliga för offentliga  
lokaler med hög trafik.



**Natursten**  
Naturstensmaterial som kan  
behöva ytbehandling efter  
montering.



**Nyans skiftning**  
Plattornas nyans skiljer sig  
från varandra.



**1-5 Slitstyrka**  
Enligt PEI skalan.

**Svenska Kakel Malmö AB**  
Tel 040-685 34 00  
malmo@svenskakakel.se

**Svenska Kakel Helsingborg AB**  
Tel 042-400 57 00  
hbg@svenskakakel.se

**Svenska Kakel Halmstad AB**  
Tel 035-21 24 10  
halmstad@svenskakakel.se

**Svenska Kakel Göteborg AB**  
Tel 031-86 64 40  
gbg@svenskakakel.se

**Svenska Kakel Stockholm AB**  
Tel 08-520 260 00  
sthlm@svenskakakel.se

**Svenska Kakel Luleå AB**  
Tel 0920-46 56 00  
lulea@svenskakakel.se